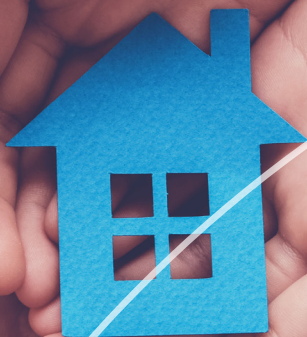


# Flood Recovery

Information and support





## Recovery takes time

Shoalhaven City Council's Outreach Team is available Monday to Friday 9.00am - 5.00pm on 1300 293 111 and is here to help.

The recovery journey can be a complex one with many challenges. We know that when seeking support having someone available to help with referrals and smooth the way is important.

**Local Support Pop Ups in villages are being arranged. Details on location, date and time will be updated on <https://shoalhaven.nsw.gov.au/floodrecovery>**

**These are difficult times for our community. Help is available to you 24/7:**

Lifeline	13 43 57
Kids Helpline	1800 55 1800
Beyond Blue	1300 22 4636
NSW Mental Health Line	1800 011 511



Find out more and **subscribe** for recovery updates at <https://shoalhaven.nsw.gov.au/floodrecovery>