

## BENDALONG VILLAGE ENTRANCE SIGN



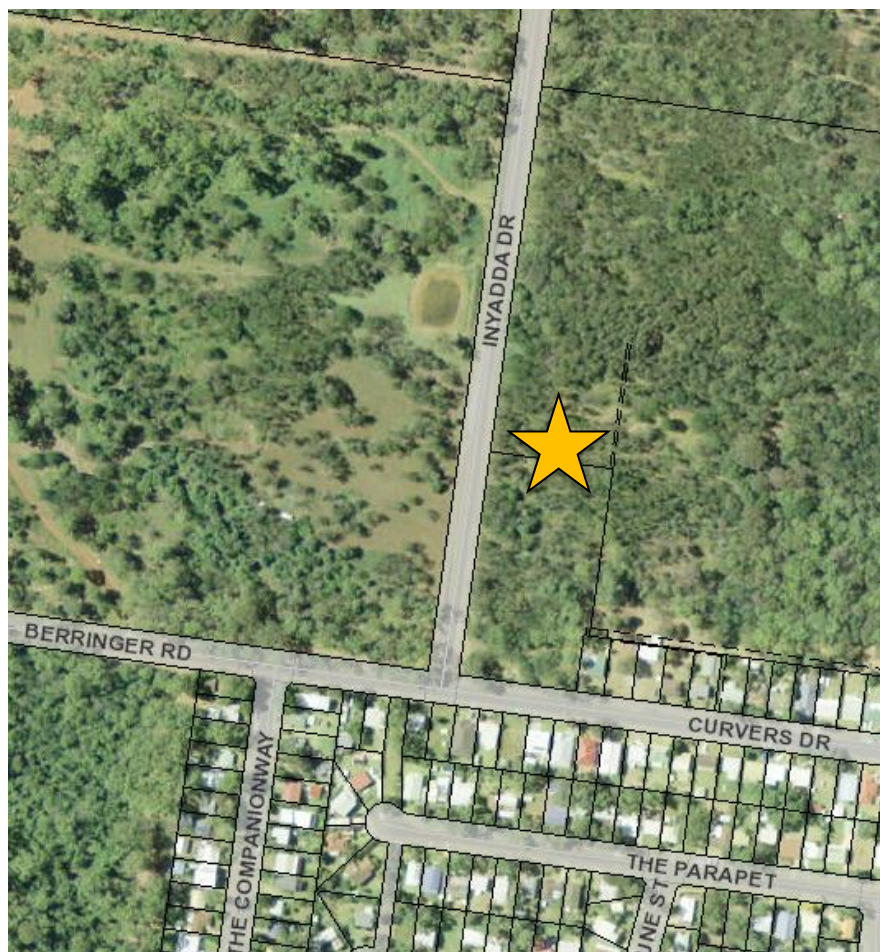
This sign will replace the horizontal blade and will be installed approx. 6m off the travelling lane. The proposed colours will Saphire Blue with Precious Silver. Refer to plan 5510\_01



## MANYANA VILLAGE ENTRANCE SIGN



This sign will replace the horizontal blade and will be installed approx. 3-6m off the travelling lane. The proposed colours will Saphire Blue with Mustard Yellow. Refer to plan 5510\_01



## CUNJARONG POINT VILLAGE ENTRANCE SIGN



This sign will replace the horizontal blade and will be installed approx. 3-6m off the travelling lane. The proposed colours will Saphire Blue with 'Pumpkin'. Refer to plan 5510\_01

